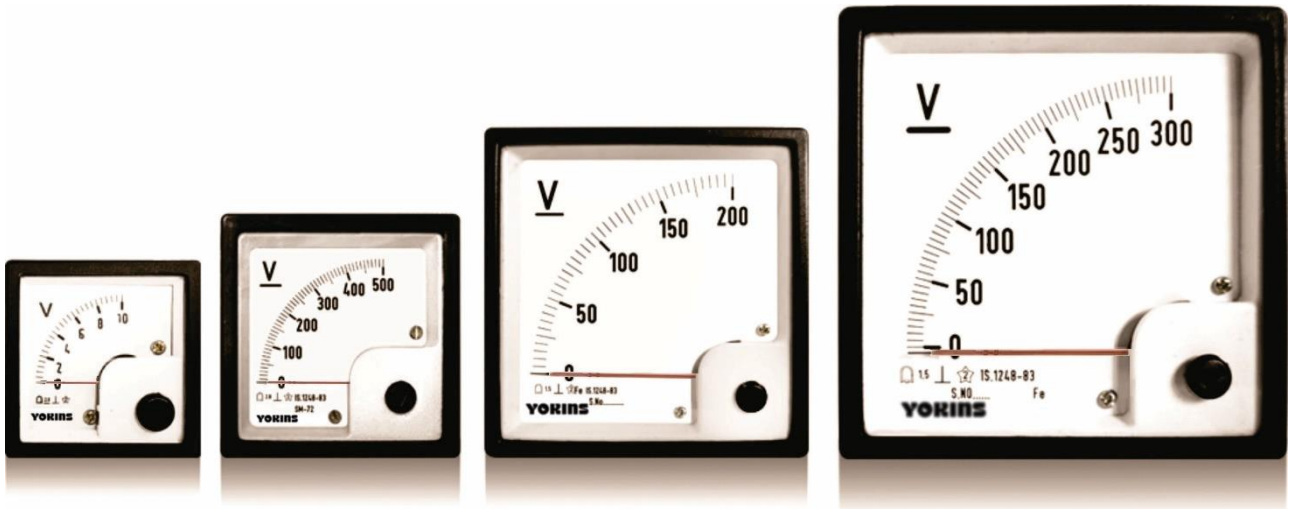


Flush Mounting Square Type



YOKINS meters are designed as per internationally accepted standard. The dimensions comply with the requirements of DIN 43700 and scales with DIN 43802. The performance confirms to IS 1248-83/93. Our enclosures are made of finest ABS and polycarbonate material in fire retardant grade.

These meters are available in

- Moving Coil Type
- Moving Iron Type
- Moving Coil Rectifier Type

In this type we have fixed dial in 48x48 and 144x144 and both fixed and interchangeable dial in size 72x72 and 96x96

Salient Features Of Interchangeable Dial Models In 72x72 And 96x96

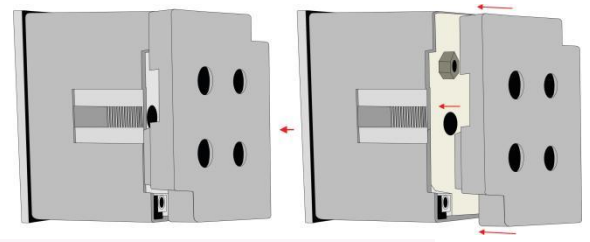
- **Interchangeable dial for range portability**

Our 72x72 and 96x96 meters comes with scale interchangeability feature. The advantage is that it reduces the inventory of the stockists, panel builders as well as end users. Our dials are designed such that accuracy of class 1.5 is maintained even when we replace the dial. Our meters have easy replaceable dials with guide slots which are very accurately designed such that, any user can easily replace the dials. The dial has a small slot by which it can be pulled out easily either using nail or a tip of a pen or clip.



- **Terminal protection with click-fitting back shrouding**

Our meters are supplied with a self-clicking back shrouding/cover which covers the terminals. This is very important feature especially for the voltmeter because these meters are usually connected on the front panel which can be opened and can be hazardous for the engineer while the maintenance of the panel is being done. The self-click avoids problems of losing the screws and washers

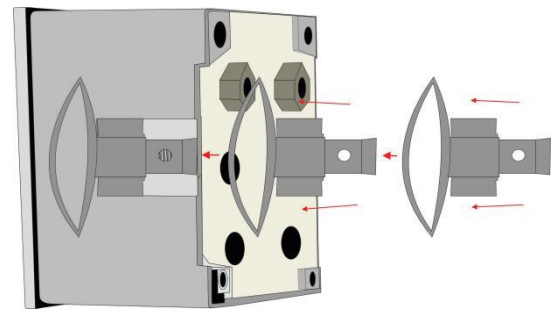


- Fire Retardant housing

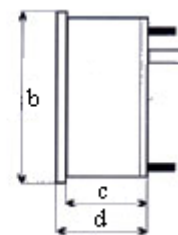
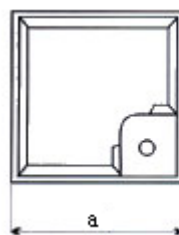
Our these two sizes are housed in robust polycarbonate casing, which is fire retardant and non drip and confirms to international regulations UL 94 V-0. Polycarbonate material used is very tough and light weight engineering plastic material.

- Clamping arrangement

Our meters have easy slide-in clamps, which makes it very easy to lock and unlock.



Dimensions for fixed dial



TYPE	FRONT (axb) (sq.mm)	PANEL CUTOUT	SCALE LENGTH	c	d	e	ACCURACY
SR/MR-144	144 X144	136 X 136	155	44	52		1.00%
SR/MR-96	96 X 96	92 X 92	92	44	52		1.50%
SR/MR-72	72 X 72	68 X 68	62	44	50		1.50%

SR/MR-48	52 x 52	46 X 46	40	37	42		2.50%
-----------------	---------	---------	----	----	----	--	-------

Dimensions for sliding dial

TYPE	FRONT (axb) (sq.mm)	PANEL CUTOUT	SCALE LENGTH	c	d	e	ACCURACY
SR/MR-96	96 X 96	92 X 92	92	44	52		1.50%
SR/MR-72	72 X 72	68 X 68	62	44	50		1.50%